

✓ Fire cleans up the forest of duff, dead wood, crowded trees, insect pests, sterilizes the soil of disease organisms, and can help remove some species of exotic weeds.

✓ The chance for high intensity fires is reduced after the forest is thinned by fire. Low and moderate intensity fires are less damaging to the forest.

✓ Some native plants are adapted to fire and won't germinate without heat to release the seeds and prepare the ground.

✓ Fire impacts are sporadic, creating a patchwork of habitats which allows for a greater diversity of plants and animals.

✓ Nutrients are released by fire. The chemical composition of the soil and ash gets altered.

## What can you do??

**ATTEND WORKSHOPS AND  
WORKDAYS  
VOLUNTEER!!  
BECOME A MEMBER of SRRC**

We all need to work together to improve the quality of our watershed. Over 6,500 volunteer person days have been logged by the SRRC.

*We couldn't do it without you!*

### SRRC's LONG TERM GOALS

☞ Enlist community members in a cooperative approach to protect and restore the Salmon River aquatic and terrestrial ecosystems.

☞ Create economic stability in the community by diversifying job opportunities based on restoration and conservation.

☞ Promote cooperative planning, education and management efforts with the managing agencies, the local Native American Tribes and the communities.

☞ Help fill the resource management gaps left by large governmental agencies which have a difficult time with small or nontraditional projects, in terms of both conception and implementation.

## Salmon River Subbasin Community Wildfire Protection Plan

The USFS/SRRC Salmon River Restoration Strategy recognizes that fire management strategies are needed to prioritize fire management options and areas in the subbasin. The strategy developed identified the highest value areas at the most risk including private property (structures & residences), critical access roads, areas with high fuel loading, areas with high aquatic or terrestrial value and existing fire control points. This identification process enabled us to prioritize areas in need of fuels treatment and help guide fire management personnel in future suppression planning. Implementation of projects identified by this process led to ecological and socioeconomic sustainability and protection of the integrity of aquatic and terrestrial ecosystems in the subbasin.

### The Fire Management Strategy was tiered to documents and directions, including:

- U.S. Forest Service National Fire Plan
- California Fire Plan
- Land & Resource Management Plan - KNF
- Fire Management Plan - KNF
- Six Rivers Nat'l Forest Fire Mngmt Plan FY 2001
- Forest Wide and specific LSR Assessments - KNF
- Salmon River Restoration Strategy - KNF/SRRC
- Watershed (Ecosystem) Analysis - KNF
- Salmon River Roads Assess. & Planning - KNF/SRRC
- Salmon River Residential Risk Assess. KNF/SRVF&R
- Private Land Management Plans i.e. Godfrey Ranch Ecosystem Management Plan
- Dialog of continued Karuk culture management strategies
- SRRC Community Restoration Plan
- Klamath Basin Fisheries Restoration Plan
- Northwest Forest Plan



The Salmon River Wildfire Protection Plan is being developed using the Fire Plan Framework created by the Salmon River Fire Safe Council. This framework identifies these planning steps for the subbasin level:

- \* Identify existing efforts
- \* Identify Fuel Modification Zones
- \* Evacuation Plan (Emergency Access)
- \* Notification Procedures
- \* Guidelines for evacuation
- \* Availability of Emergency Services
- \* High risk individuals (i.e. medical concerns, age factors)
- \* Location of Helicopter landings
- \* Location of Safe Areas in Neighborhoods
- \* Identify High Risk Areas (also identify low and medium risk areas)
- \* Identify Opportunities (i.e. Landowner buy-in)
- \* Identify Water Sources for fire protection efforts
- \* Update or develop Pre-Fire Plan (Residential Risk Assessment)
- \* Identify Resource Values and Prioritize (Assets at Risk) \* Man made \* Cultural \* Natural

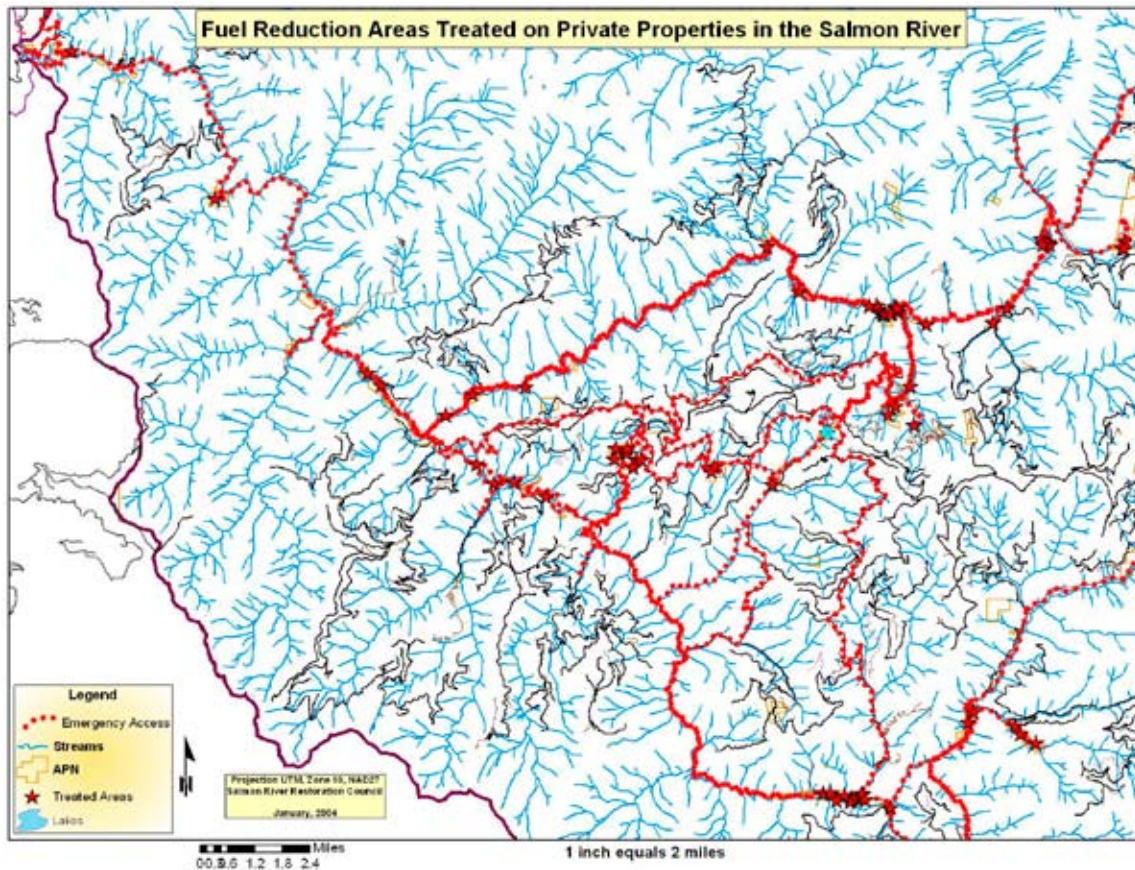
Another planning step is to identify opportunities for returning fire to the ecosystem in appropriate areas. "Returning fire to the ecosystem" refers to treating areas where it will be possible for fire to burn through with maximum benefit and minimum negative impacts. This can be accomplished with a multi-stage approach. In the first stage, areas can be treated with a shaded fuel break, pull-back, or lop and scatter prescription, or a combination of prescriptions. The second stage may consist of pile burning, jackpot burning, underburning, or no further action. The particular series of events will vary depending on the area and surroundings. To a practical extent, existing roads, trails, and streams will be used as firebreaks.

## Salmon River Restoration Council



*"The aquatic and terrestrial ecosystems are the single most important factor in determining the ecological and economic well-being of our rural riverine communities"*

Since 1992, the Salmon River Restoration Council, a community-based 501(c)(3) nonprofit, has sponsored an annual series of ecosystem awareness training workshops, educational and monitoring field trips, volunteer training workdays as well as accomplishing specific on-the-ground projects. The SRRC and the managing agencies work together to develop agreements and memorandums of understanding for various resource protection, enhancement, and awareness and training projects in the Salmon River subbasin. We coordinate with the Salmon River Volunteer Fire & Rescue and the Scott/Salmon River Ranger District to set up an inventory and develop pre-attack planning information for private residences.



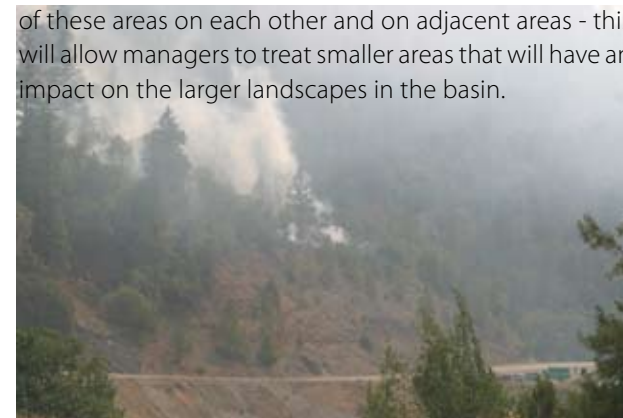
The Salmon River watershed is one of the most biologically intact ecosystems left for wild Salmon and Steelhead runs. Almost a million acres of wilderness surrounds the Salmon River. The steep river corridors, numerous vertical canyons, remoteness and difficult access are a few reasons why this refugia is still intact. SRRC has identified catastrophic fire as being the #1 long term threat to fisheries due to increased sediment and water temperatures. At present, fuel loading is at an unnaturally high hazard level in many areas of the watershed. This current fuel loading threatens to severely damage the more biologically intact or recovering landscapes, as well as burn more homes. Without critical and careful fuels management, one can easily predict that high intensity wildfires will return more frequently and with greater severity.



The Salmon River Restoration Council is reducing high-risk fuels on private properties in the Salmon River area. Techniques include handpiling, pullback and lop & scatter. After fuels are piled, burning or chipping are used to remove the material. The objective is to break up the continuity of fuels on the ground and reduce the fuel ladder. Starting in 1995, we have completed a series of Shaded Fuel Breaks on private parcels in the subbasin. Included in each project is selected release of native plants which are the most fire resistant and which provide shade for the riparian areas as well as the fuel breaks. By leaving canopy cover in these areas, regrowth of flammable brush species is limited. While these shaded fuel breaks will not stop a fire, it gives needed Safety Areas around homes, critical escape routes, and safe access for fire suppression personnel.

**This can be a part of a larger fuels management strategy, and meets the Salmon River Fire Safe Council's mission statement to “..help plan, implement and monitor the reinstatement of natural fire regimes in the Salmon River ecosystem in a manner that protects life, property, improves forest health, and enhances the resources valued by its stakeholders”.**

The conditions and threats in the watershed mandate that we identify needs and prioritize and complete projects in a timely manner. As we look at the range of conditions and concerns, we can piece together a cohesive strategy that will detail areas needing specific treatment or protective measures. The identification of priority areas on private and public WUI lands will include the influence of these areas on each other and on adjacent areas - this will allow managers to treat smaller areas that will have an impact on the larger landscapes in the basin.



Salmon River Fire Safe Council (FSC) receives funding for planning and fuel reduction work and to develop Community Wildfire Protection Plans for properties and towns on the Salmon River. FSC is performing fuel reduction activities on prioritized “High Risk” areas on each of the project properties. The planning is accomplished with the active participation of the landowners, the Salmon River Volunteer Fire & Rescue, Karuk Tribe Dept of Natural Resources, US Forest Service, CA Dept of Forestry, and the Salmon River Restoration Council. Our goal is to map out “High Value” areas, “High Risk” areas and access routes. High Risk areas and access routes will be prioritized and fuel reduction activities will be designed to reduce risk and provide for the safety of landowners and emergency personnel. Agency consultation and planning assistance will occur on lands in the private/ public interface areas when needed or desired.

The Fire Safe Council also has a Planning Team to develop detailed fuel management plans for private properties and adjacent public interface areas. This proposal also includes fuel reduction work in the prioritized areas. If you are interested in having the FSC help you with fuel reduction on your property, please call Robert Will at 462-4665 or contact Jim Bennett at 462-4605.

**If you would like assistance in making a fire plan or need help in reducing fuels on your land in the Salmon River area, please let us know.**



Salmon River Restoration Council  
 PO Box 1089 • 25631 Sawyers Bar RD  
 Sawyers Bar, California 96027  
 530-462-4665 Fax 530-462-4664  
 e-mail: [Info@srcc.org](mailto:Info@srcc.org)  
 website: [www.srcc.org](http://www.srcc.org)

**Let's work together for a Fire Safe Salmon River**

*Partially funded by the US Fish & Wildlife and the CA Dept of Fish & Game in cooperation with the Salmon River Volunteer Fire & Rescue, Salmon River Fire Safe Council, and the US Forest Service*

